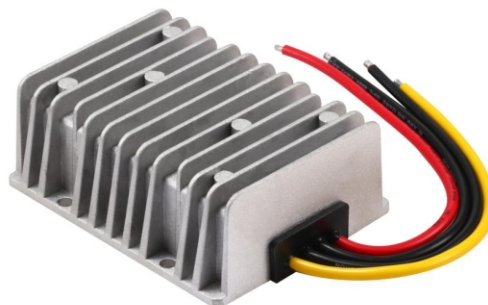




WH-C482430 Series DC DC converter

Summary

- > Rated output: power 720W
- > Input voltage: 48VDC



General specification

100 × 80 × 38mm

| Specification | Model | WH-C482430 |
|---------------------------|-------|---|
| Rated output power | | 720W |
| Rated input voltage | | 48VDC |
| Rated output voltage | | 24VDC |
| Voltage range | | 30V-60VDC |
| Starting voltage | | 30VDC 100% Load |
| Input reverse protection | | Not have |
| No-load power consumption | | < 4W |
| Efficiency | | 95% |
| Voltage | | 24VDC |
| Current | | 30A |
| Voltage tolerance | | 1% |
| Load regulation | | 3% |
| Wave(mvp-p) | | 100mv External 22UF capacitor ESR < 0.1 Ω 100KHZ |
| Over current protection | | In the case of rated output, if the current exceeds 120% of the rated current, the overcurrent protection will act, and it will automatically recover after the overcurrent disappears. |
| Short circuit protection | | Equivalent to a maximum current of 35A and an output voltage of 0V |
| Input-output | | Non-isolated |
| Waterproof | | Fully sealed and waterproof |
| Dimension | | 100×80×38mm |
| N.W. | | 500g |
| Cooling method | | Natural Method |
| Rated temperature rise | | 45°C |
| Reliability | | > 100000h |
| Wire indicator | | Input positive (red), input output negative (black), output positive (yellow), lead length= 200mm \pm 10mm |

PIC and installation dimensions

